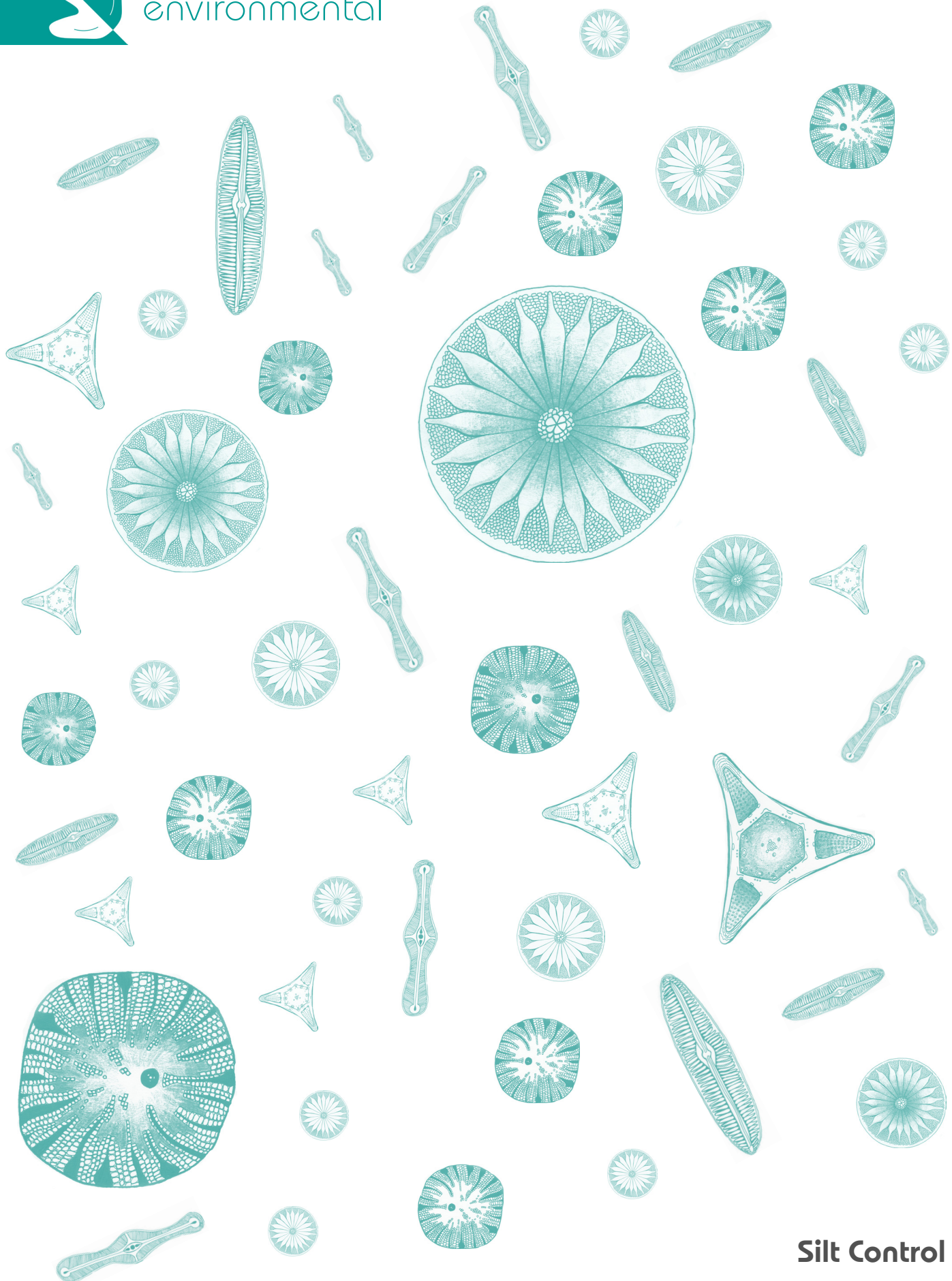




frog
environmental



Silt Control
Product Guide



frog environmental are specialists when it comes to sediment control and water quality. We are professional environmentalists, here to help you protect and conserve the environment.



SiltMat

- Captures sediment and prevents resuspension in high flows
- Proven in the field to reduce downstream sediment pollution
- Each 2 x 1 metre mat can capture over 40 kg of silt
- Easily deployed on site, in ditches, channels and watercourses



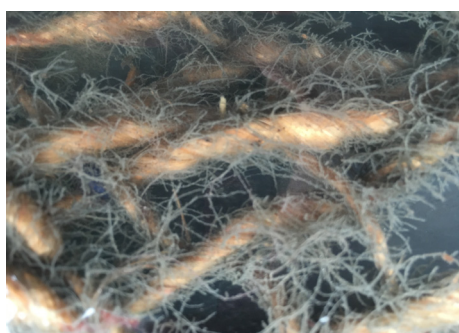
Floc Mat

- Treats and polishes muddy water from construction sites
- Active ingredient binds sediment and enables separation of silt from water
- Versatile product with a wide range of sediment control applications
- Deployed on land and in drainage channels to clean muddy water before it is discharged



Silt Wattle

- Reduces flow rate and aids natural sediment collection
- Filters water and traps sediment reducing downstream levels of TSS
- Durable solution that can be left on site over a period of months
- Deployed on slopes, in ditches and channels and used as a boundary protection



Treated Geo-Jute™

- Polishes water in discharge channels from lagoons and settlement ponds
- Rolled product, easy to handle and deploy
- Active ingredient binds and traps sediment preventing downstream pollution
- Biodegradable and disposable to bankside (with correct permit)



We provide simple, effective and good value sediment management interventions that are easy to use and designed to reduce pollution from construction activities



Water Lynx Blocks

- Environmentally friendly flocculant blocks safe to use in site drainage
- Different blends to suit site specific water and soil chemistry
- Binds fine clays and silt making it easier to capture and remove
- Deployed in ditches upstream of settlement ponds



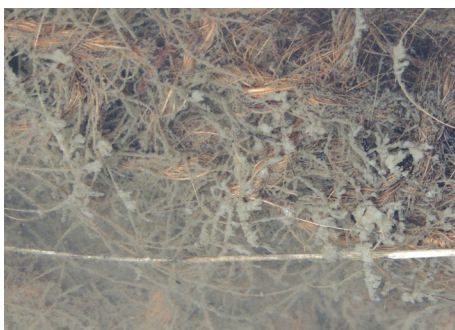
Pipe Reactor™

- Pumped system using Water Lynx to separate water from sediment
- Highly portable, used for dewatering muddy excavations on construction sites
- Fits to standard 2" or 3" inch pump
- Deployed with silt capture products to capture flocculated particles



Silt Capture Channel

- Uses Floc Mat, SiltMat, Silt Wattles and Treated Geo-Jute to create bespoke silt treatment
- Captures and binds silt, cleaning muddy construction site water
- Easily monitored with consumable products replaced quickly & simply
- No ground disturbance or excavations required, reusable channel lining



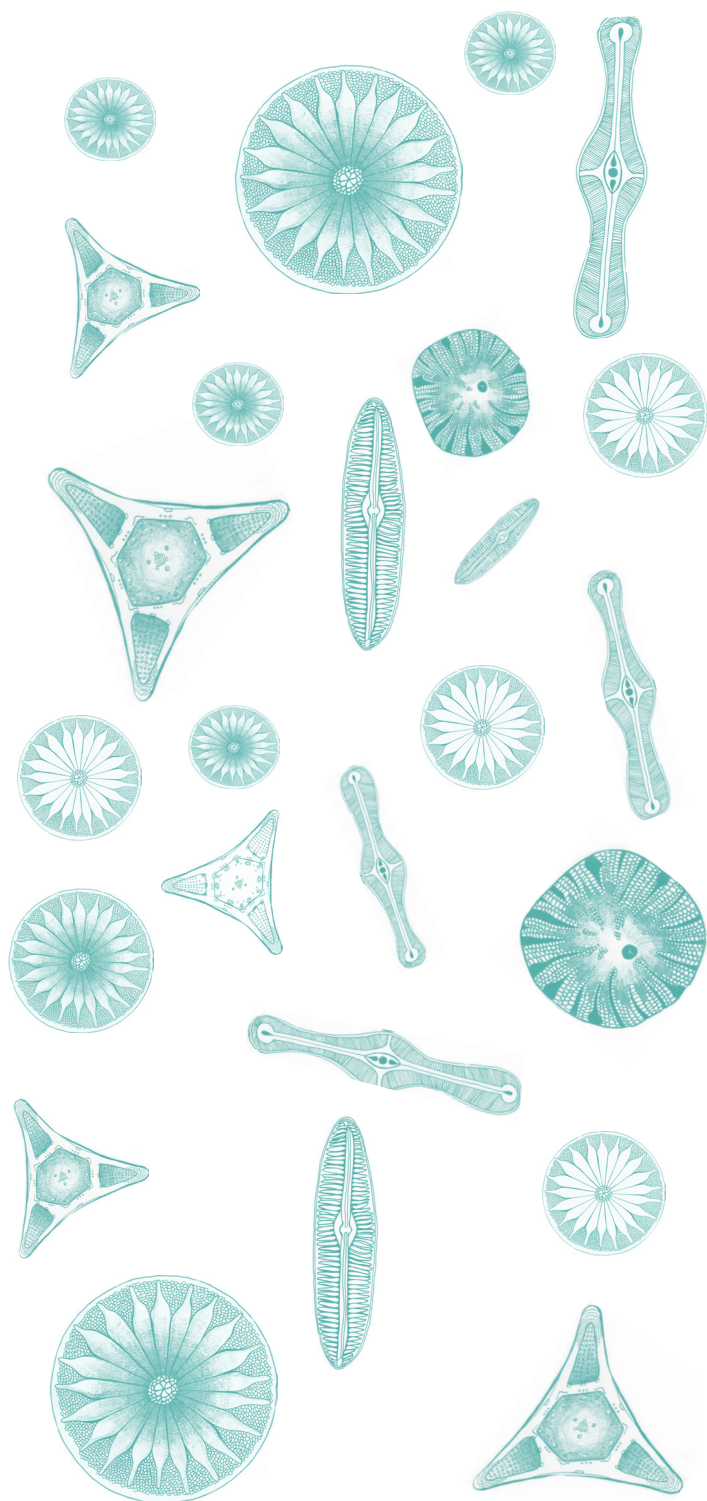
Silt Net

- Improves performance of settlement ponds and lagoons
- Semi-permeable barrier treated with active ingredient to help bind sediment
- Highly durable solution using combination of biodegradable natural fibres
- Deployed across the width of treatment ponds to capture silt





frog
environmental



Sediment is widely acknowledged as being the most common pollutant arising from construction activities.

frog environmental has developed a sediment control product range designed to reduce pollution, improve environmental compliance and support the good performance and reputation of our clients.

As well as researching and developing our own products frog environmental act as exclusive distributor for product designers and manufacturers who share our ethos of providing low carbon, simple and effective sediment control solutions.

Most of our solutions can be implemented with minimal guidance. These are typically available at short notice and provide a quick and effective approach to preventing sediment pollution.

Many projects require a site-specific approach to sediment management and water quality. frog environmental can provide technical support and an efficient sampling service to help provide the most effective solution for your site.

For advice on preventing sediment pollution,
contact frog environmental

0845 057 4040

info@frogenvironmental.co.uk

www.frogenvironmental.co.uk

@frogenv



Working in partnership

Wales: Banc y Berllan, Llansadwrn,
Llanwrda, Dyfed SA19 8NA
Accounts: Croxton Park, Croxton,
Thetford, Norfolk, IP24 1LS

Artwork by Siobhan Fedden