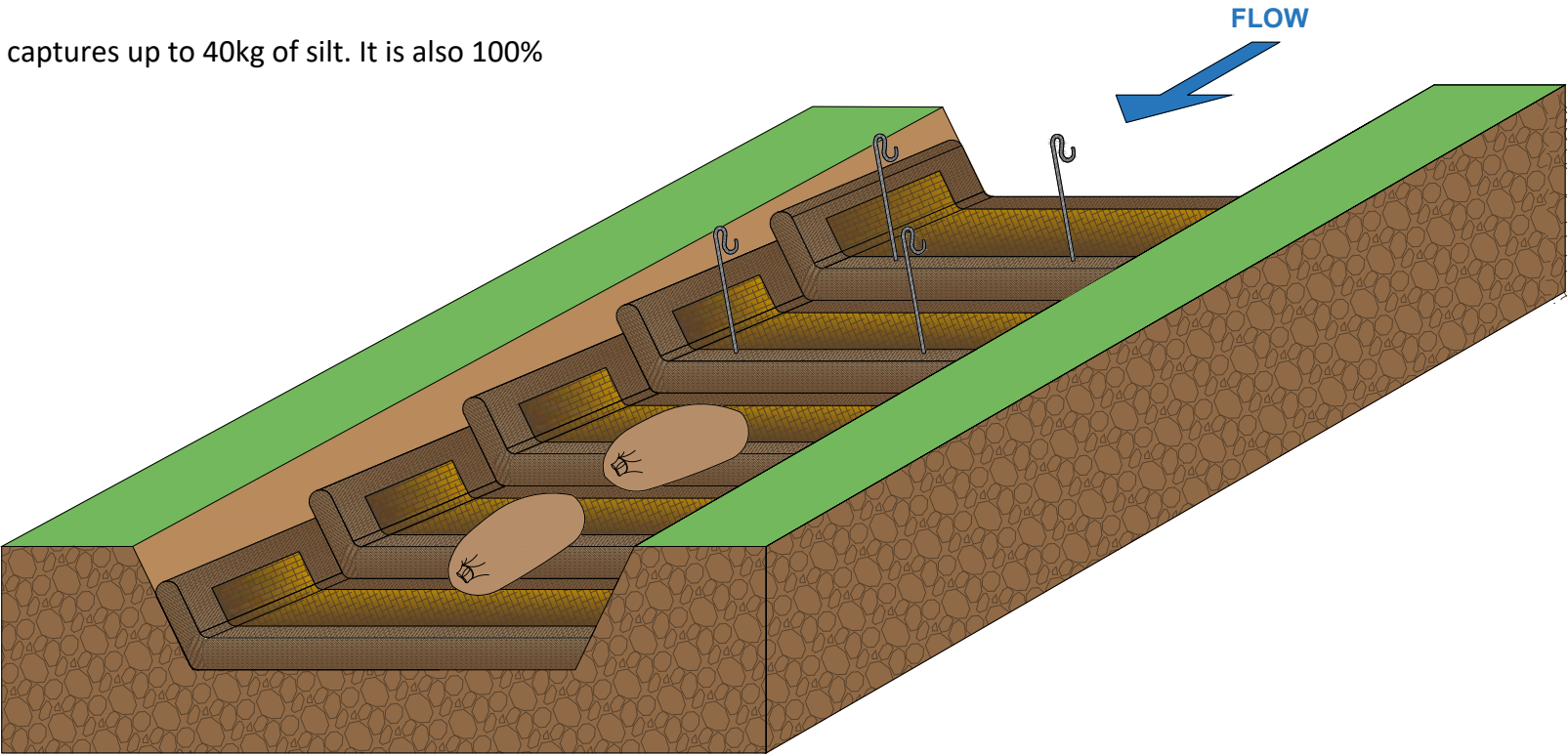
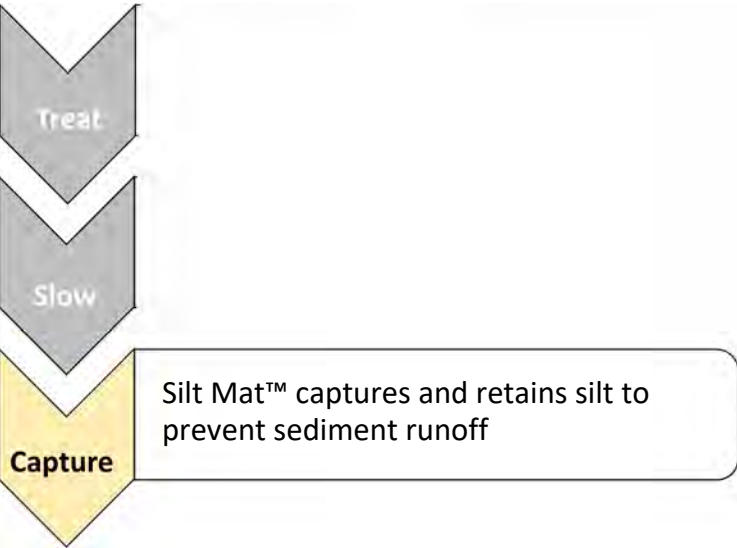


Silt Mat™ Deployment Guidance

Designed by Frog Environmental, Silt Mats™ are a simple, yet effective solution which can be laid in ditches to increase friction and trap silt particles. They also help stabilise the ditch and control erosion.

The mats can be installed either widthways or lengthways along the channel depending on ditch profile and lining.

Silt Mat has a dry weight of 12kg, measures 2m x 1m and captures up to 40kg of silt. It is also 100% biodegradable for easy disposal.



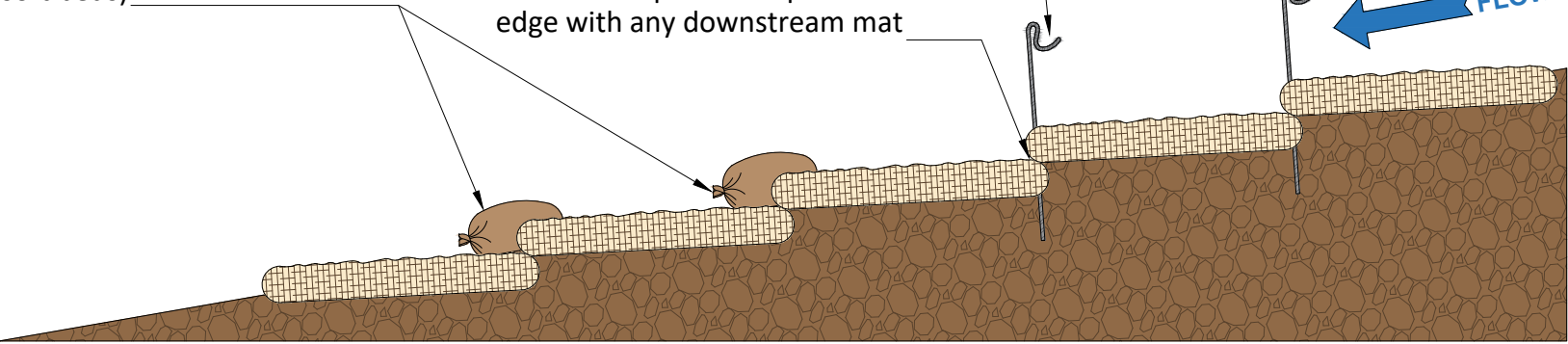
Ditches with greater than a 3' degree slope (5.2% gradient) typically require check dams to reduce the velocity of water

Metal stakes used to hold Silt Mat™ in position (soft beds only). Ensure site has permission to use stakes prior to staking.

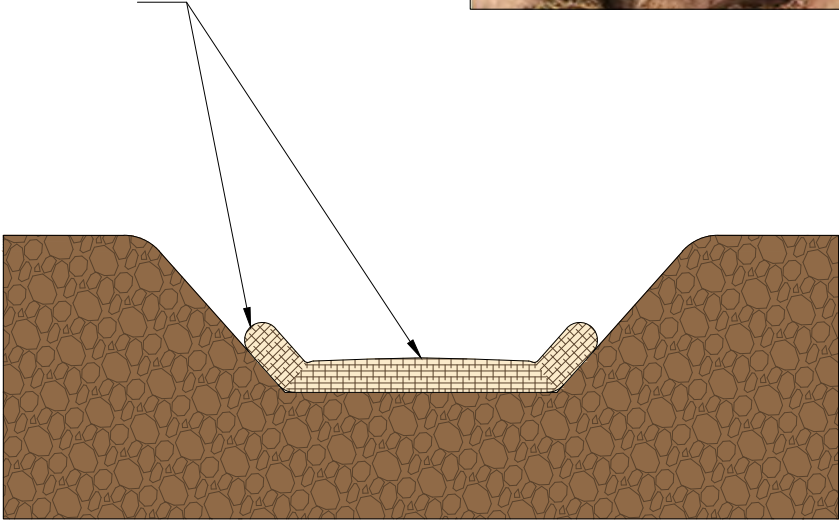
Ensure mats mould to the profile of the ditch and that their corners are elevated up the sides of the ditch to encourage water to flow on top of the mat rather than escaping underneath or at the sides

Sand bags used to weight Silt Mat™ at each overlap (hard or soft beds)

The mat needs to be in contact with the ditch surface and sides, with a 10cm overlap off the upstream mat edge with any downstream mat



2D Side Elevation



2D Cross Section

Drawing Ref: SM-PD-05v1
Revision: v1
Scale: Drawings not to scale



Drawings are for guidance only, not for construction purposes. Ensure risk has been assessed prior to deployment of products supplied by Frog Environmental. Further advice available by contacting us at www.frogenvironmental.co.uk/contact-us

©Frog Environmental 2024. No reproduction or re-use without the express written permission of Frog Environmental. All rights reserved.