

Aeration

« Bubble Tubing™ » Linear Diffuser

Bubble Tubing™ is a Canadian-made micro bubble linear diffuser tubing that is flexible and resistant to kinking and memory.

With a row of perforations on each side, **Bubble Tubing™** is an extremely efficient aeration diffuser for many different applications. The main tubing format comes with weighted, dense PVC ballast bonded to the perforated tube. Non-weighted formats are also available.

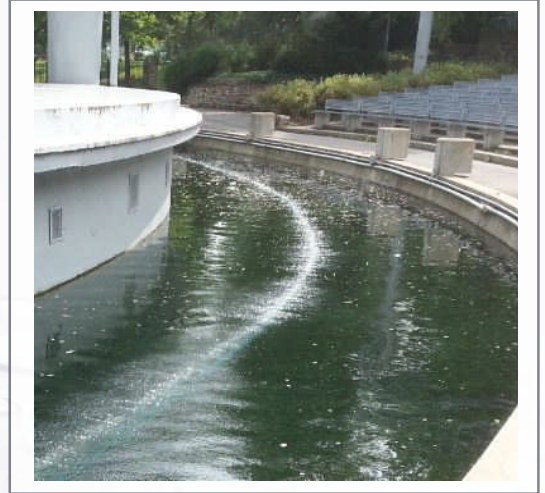
For industrial applications longer lengths of **Bubble Tubing™** are available, and installation is made easy due to the stainless steel rope integrated into the ballast core.

As **Bubble Tubing™** has no moving parts in the water, maintenance and repair are kept to a minimum.

Bubble Tubing™ is designed to resist deterioration from exposure to a wide range of chemicals, salinities, pH and temperatures.

"Overall, the results obtained for the Bubble Tubing were uniformly excellent and produced some of the highest SOTE values GSEE, Inc. has observed."

- GSEE, Inc. Environmental Consultants,
Lavergne, TN, Sept. 2011.



Applications

- Aeration
- Shockwave Attenuation
- Aquatic Barrier
- Mixing
- Pathogen Reduction

Size & Format

- 3 Sizes: 1/2" ID, 3/4" ID and 1" ID,
- Self Weighted or Non Weighted (Except the 1" ID),
- Coils or Reels available,
- Custom lengths available.

Markets

- Ponds and lakes
- Wastewater
- Aquaculture
- Marinas and Ports
- Canal Aeration
- Drinking waters

Contact us for performance, sizing, custom orders and pricing.



Minimum pressure:

20 psi - 1.4 BAR

Maximum pressure:

1/2" ID and 3/4" ID: 50 psi - 3.4 BAR

1" ID: 70 psi - 4.8 BAR

Suggested airflow:

1/2" ID: 0.05CFM/ft - 4.62 LPM/m

3/4" ID: 0.65CFM/ft - 6.07 LPM/m

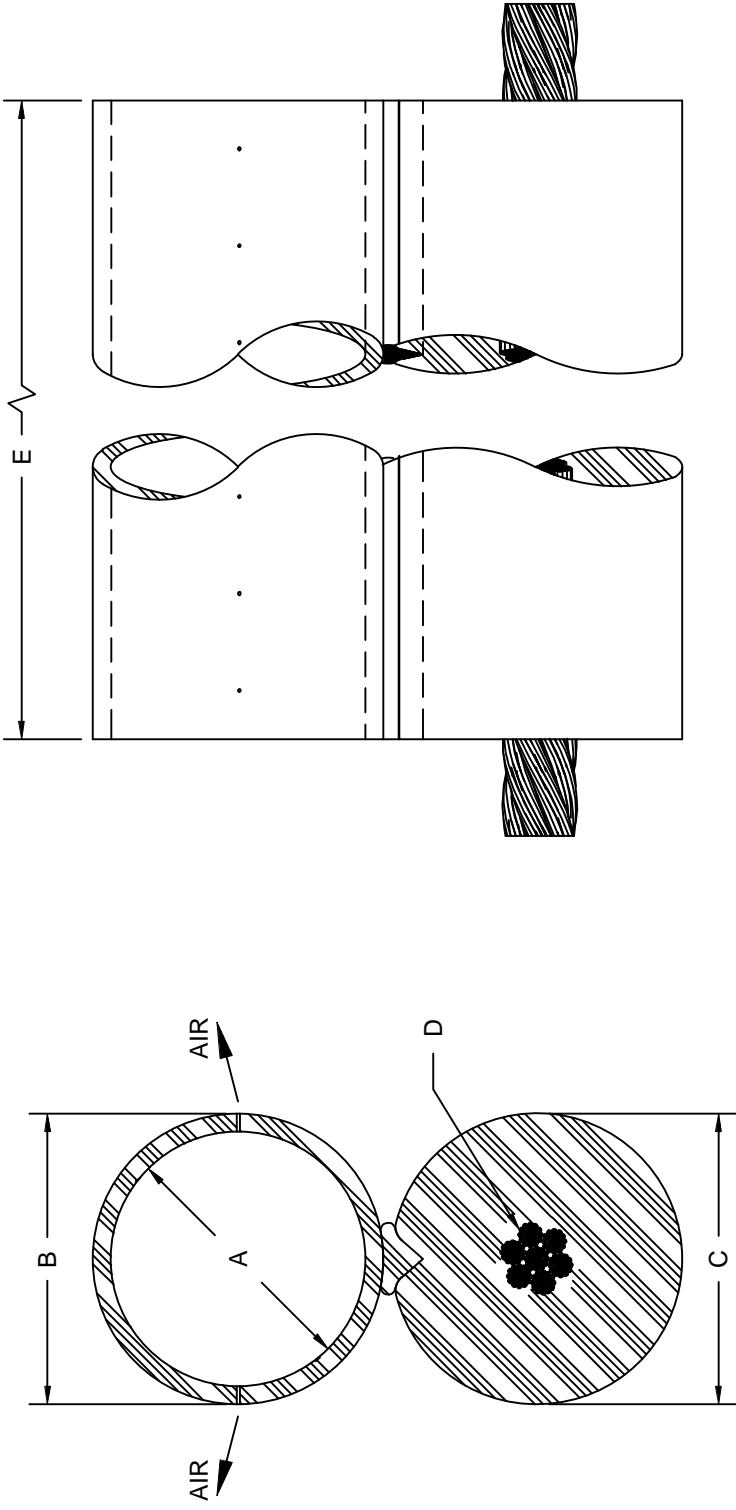
1" ID: 0.1 CFM/ft - 9.28 LPM/m

Maximum airflow:

1/2"ID : 0.1 CFM/ft - 9.28 LPM/m

3/4"ID : 0.12 CFM/ft - 11.2 LPM/m

1"ID : 0.2 CFM/ft - 18.56 LPM/m



CODE	BUBBLE-TUBING™	TUBING O.D.			WIRE CABLE*			AVAILABLE LENGTHS
		A	B	C	D	E		
BUB12NW	1/2 (15MM) NON-WEIGHTED	0.575" (14.6 MM)	0.700" (17.8 MM)	0.970" (24.6 MM)		100' (30.5M), 300' (91.4M)		
BUB12	1/2 (15MM) WEIGHTED	0.575" (14.6 MM)	0.700" (17.8 MM)	0.970" (24.6 MM)		100' (30.5M), 200' (60M), 400' (122M)		
BUB34NW	3/4 (20MM) NON-WEIGHTED	0.825" (21 MM)	1.013" (25.7 MM)	1.170" (29.7 MM)	1/4" (6.4 MM)	100' (30.5M), 300' (91.4M)		
BUB34	3/4 (20MM) WEIGHTED	0.825" (21 MM)	1.013" (25.7 MM)	1.170" (29.7 MM)	1/4" (6.4 MM)	200' (61M), 400' (122M)		
BUB1.0	1" (25MM) WEIGHTED	1.075" (27.3 MM)	1.2" (30.5 MM)	1.550" (39.4 MM)	1/4" (6.4 MM)	400' (122M), 600' (182.8 M)		
BUB1.25	1-1/4 (30MM)	1.325" (33.7 MM)	1.513" (38.4 MM)	1.170" (29.7 MM)	3/8" (9.5 MM)	825' (250M)		

*7-19 STRAND CORE (SS-316)

CODE	BUBBLE-TUBING™	PRESSURE		AIR FLOW		AIR FLOW - BUBBLE WALL	WEIGHT
		MIN.	MAX.**	AERATION / AERATION	DE-ICING - BUBBLE WALL		
BUB12NW	1/2 (15MM) NON-WEIGHTED	20 PSI (1.4 BAR)	50 PSI (3.4 BAR)	0.05 - 0.1 CFM / ft (4.64 - 9.28 LPM/m)	max: 0.17 CFM / ft (15.8 LPM/m)	0.1 lb/ft (0.15 kg/m)	
BUB12	1/2 (15MM) WEIGHTED	20 PSI (1.4 BAR)	50 PSI (3.4 BAR)	0.05 - 0.1 CFM / ft (4.64 - 9.28 LPM/m)	max: 0.17 CFM / ft (15.8 LPM/m)	0.6 lb/ft (0.9 kg/m)	
BUB34NW	3/4 (20MM) NON-WEIGHTED	20 PSI (1.4 BAR)	50 PSI (3.4 BAR)	0.065 - 0.12 CFM / ft (6.0 - 11.2 LPM/m)	max: 0.25 CFM / ft (23.2 LPM/m)	0.2 lb/ft (0.30 kg/m)	
BUB34	3/4 (20MM) WEIGHTED	20 PSI (1.4 BAR)	50 PSI (3.4 BAR)	0.065 - 0.12 CFM / ft (6.0 - 11.2 LPM/m)	max: 0.25 CFM / ft (23.2 LPM/m)	1.0 lb/ft (1.5 kg/m)	
BUB1.0	1" (25MM) WEIGHTED	20 PSI (1.4 BAR)	70 PSI (4.8 BAR)	0.1 - 0.2 CFM / ft (9.28 - 18.56 LPM/m)	max: 0.25 CFM / ft (23.2 LPM/m)	1.25 lb/ft (1.8 kg/m)	
BUB1.25	1-1/4 (30MM)	20 PSI (1.4 BAR)	70 PSI (4.8 BAR)	N/A	UPON REQUEST	1.5 lb/ft (2.2 kg/m)	

**MAXIMUM BACK PRESSURE READING NOT TO EXCEED DURING OPERATION



Canadianpond.ca

TOUTE INFORMATION CONTENUE DANS CE DOCUMENT EST LA PROPRIÉTÉ EXCLUSIVE DE PRODUITS ETANG.CA LTÉE. TOUTE REPRODUCTION PARTIELLE OU ENTIÈRE EST STRICTEMENT INTERDITE SANS AU PRÉALABLE AVOIR REÇU L'AUTORISATION ÉCRITE DE PRODUITS ETANG.CA LTÉE.
 ALL INFORMATION CONTAINED IN THIS DOCUMENT IS PROPRIETARY TO CANADIAN POND.CA PRODUCTS LTD. DUPLICATION OR TRANSMITTAL OF THIS DOCUMENT IS STRICTLY PROHIBITED WITHOUT THE WRITTEN CONSENT OF CANADIANPOND.CA PRODUCTS LTD.

APPROUVÉ PAR / APPROVED BY: M. PARIS
 DESSINÉ PAR / DRAWN BY: D. MARTIN
 DATE: 11-1-2015
 513 KNOXWILTON ROAD, KNOWLTON, QUÉBEC, J0E 1W0, TEL. 450-243-0976, FAX. 450-243-1834

